

MSCA

Marie Skłodowska-Curie Actions

Developing talents, advancing research



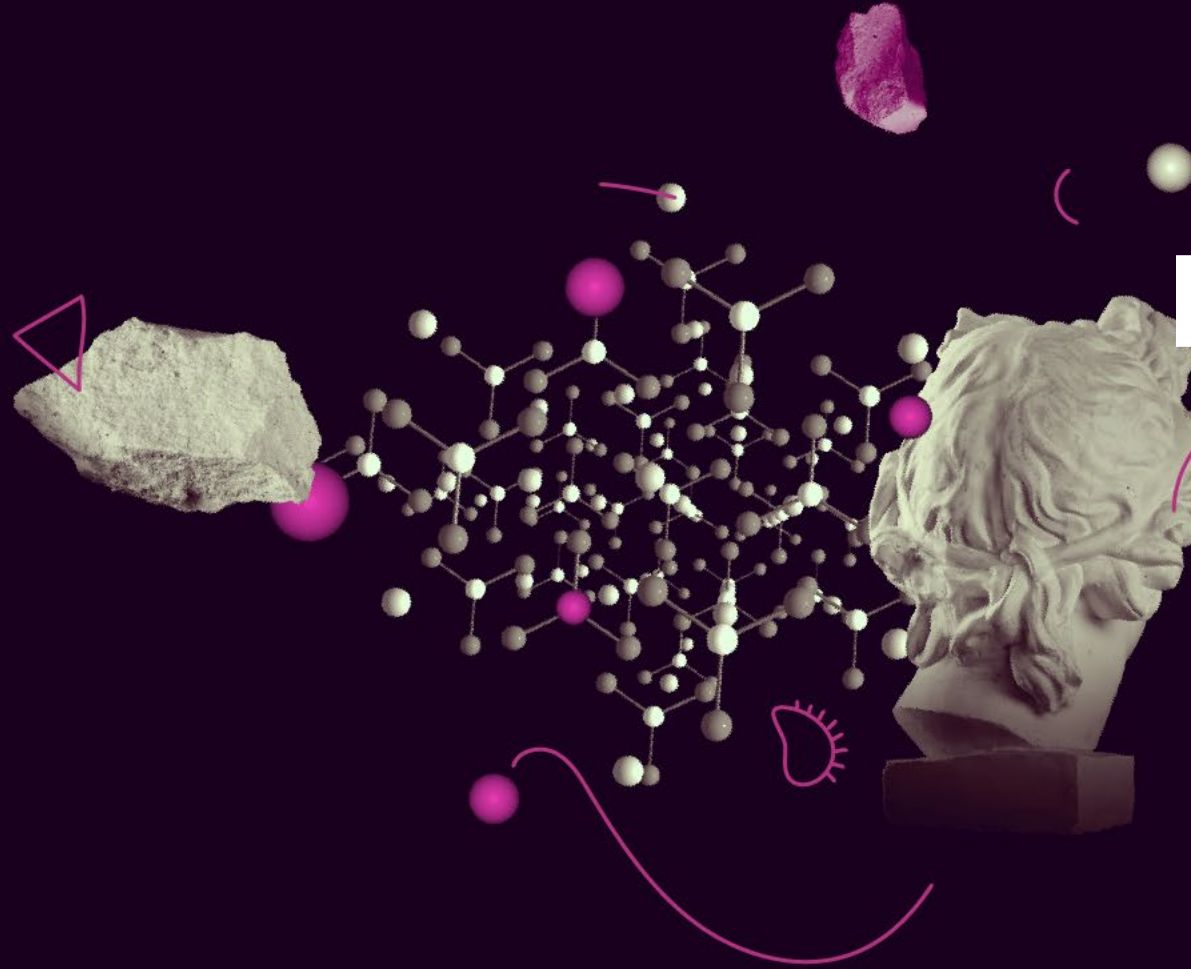
How can you benefit from MSCA? Overview of Actions

Gordana Vlahović

MSCA NCP

Head of International Relations & Project Office

Faculty of Sciences, University of Novi Sad





MSCA under Horizon Europe

Marie Skłodowska-Curie Actions

Equipping researchers with new knowledge and skills through mobility and training

€6.6 billion

SPECIFIC PROGRAMME: EUROPEAN DEFENCE FUND

Exclusive focus on defence research & development

Research actions

Development actions

HORIZON EUROPE

SPECIFIC PROGRAMME IMPLEMENTING HORIZON EUROPE & EIT*

Exclusive focus on civil applications



**Pillar I
EXCELLENT SCIENCE**

European Research Council

Marie Skłodowska-Curie

Research Infrastructures

(bottom-up)



**Pillar II
GLOBAL CHALLENGES &
EUROPEAN INDUSTRIAL
COMPETITIVENESS**

Clusters

- Health
- Culture, Creativity & Inclusive Society
- Civil Security for Society
- Digital, Industry & Space
- Climate, Energy & Mobility
- Food, Bioeconomy, Natural Resources, Agriculture & Environment

Joint Research Centre

(top-down)



**Pillar III
INNOVATIVE EUROPE**

European Innovation Council

European Innovation Ecosystems

European Institute of Innovation & Technology*

(bottom-up)

WIDENING PARTICIPATION AND STRENGTHENING THE EUROPEAN RESEARCH AREA

Widening participation & spreading excellence

Reforming & Enhancing the European R&I system

EURATOM

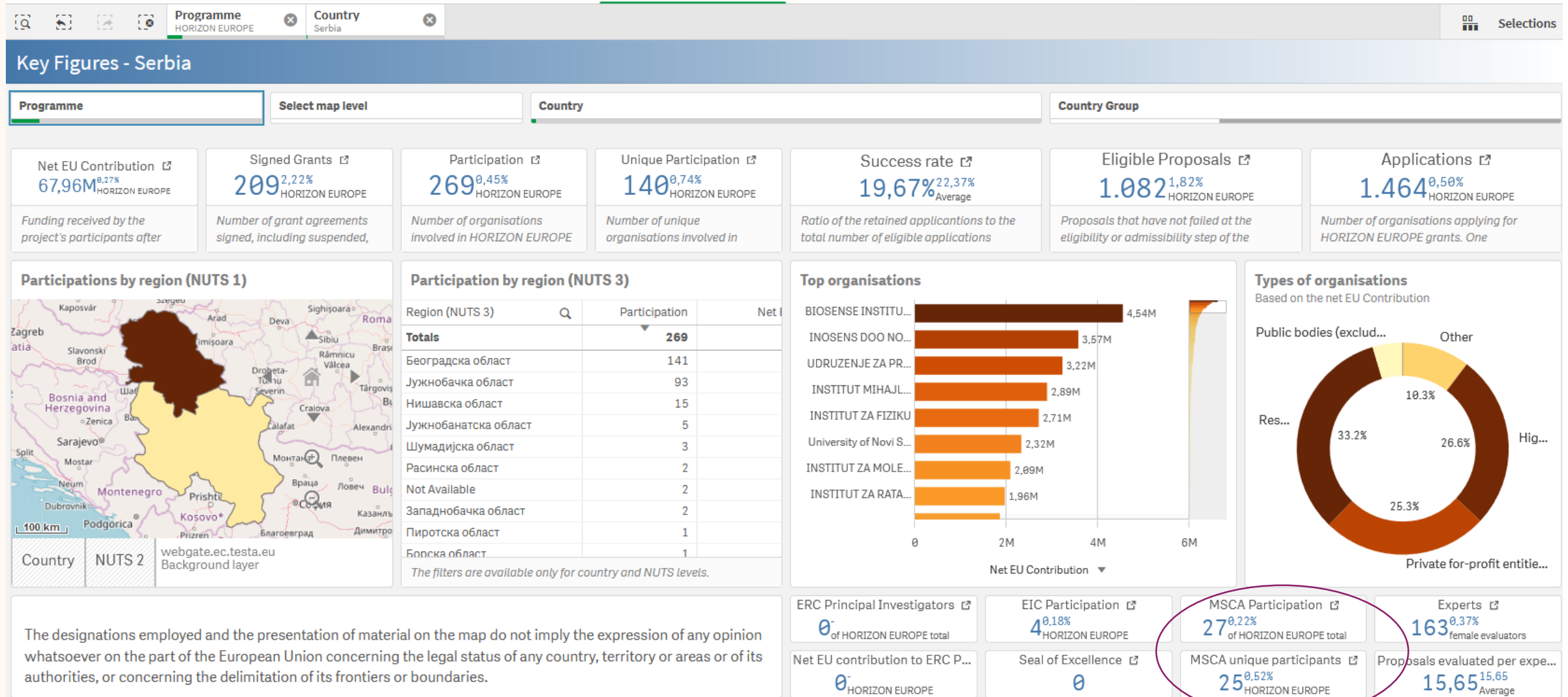
Fusion

Fission

Joint Research Center

* The European Institute of Innovation & Technology (EIT) is not part of the Specific Programme

Horizon Europe Dashboard/Serbia

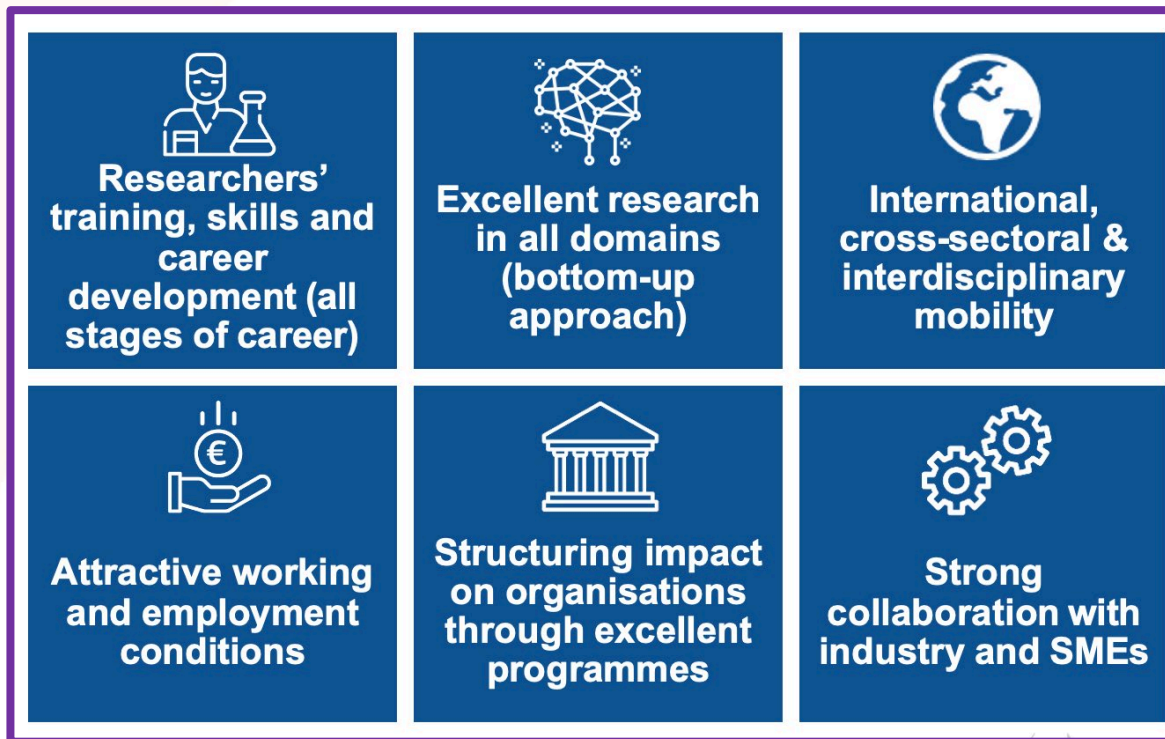
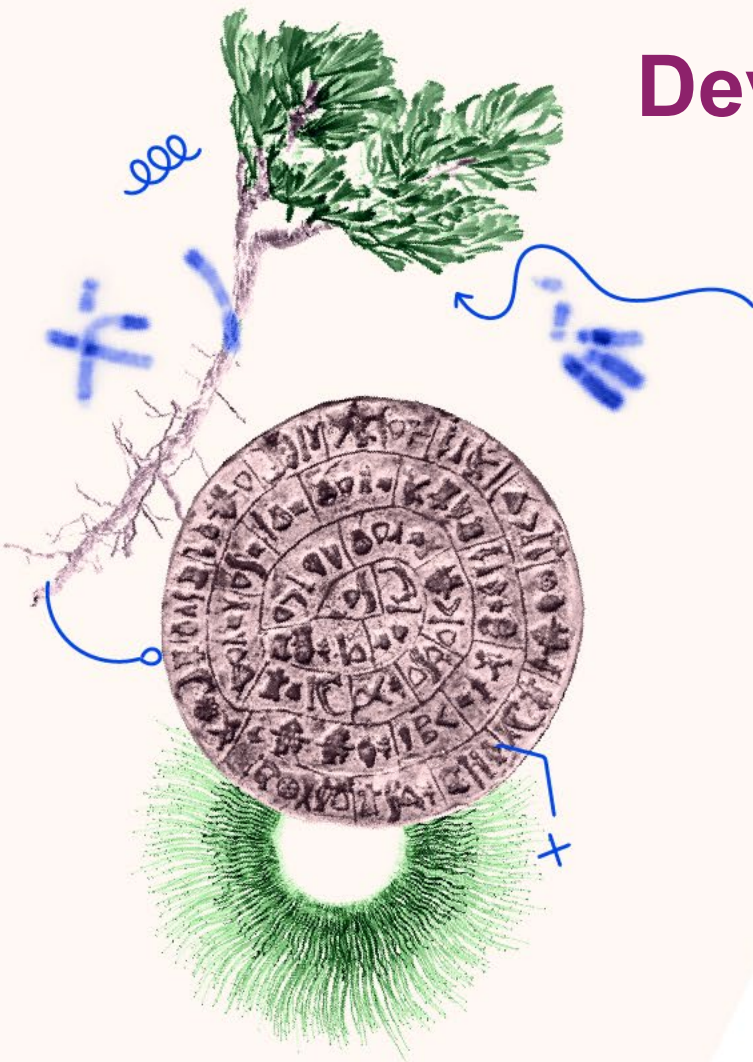




Marie Skłodowska - Curie Actions (MSCA)

Work Programme
2023-2024

Developing talents, advancing research



5 areas of intervention:

- *Mobility of researchers*
- *training of researchers**
- *strengthening human capital across the ERA*
- *facilitating synergies*
- *promoting public outreach*

* [EU Principles on Innovative Doctoral Training](#)



Marie Skłodowska-Curie Actions

DOCTORAL NETWORKS

Training of Doctoral Candidates

Doctoral programmes;
Partnerships of universities,
research institutions, research
infrastructures, SMEs and other
socio-economic actors

DN encouraged to lead to
Industrial Doctorates and Joint
Doctorates

POSTDOCTORAL FELLOWSHIPS

Advanced Training for Excellent
Researchers

European and Global PFs

Secondments, Placements in the
non-academic sector, Training
Activities and Career Development

STAFF EXCHANGE

International, Inter-Sectoral and
Interdisciplinary Short-Term Mobility

Open to research, technical,
administrative and managerial staff
supporting R&I activities

Secondments & Skills Development

COFUND

Co-financing New or Existing Doctoral
Programmes and Postdoctoral Fellowship
Schemes

Enhancement of human resources in R&I at
regional, national or international level

Bottom-Up or Aligned with RIS3

CITIZENS

Bringing Researchers Closer to the Public
at Large

Event to Boost public recognition of
science and research education

Applications submitted by one or by a
consortium of at least two legal entities



Marie Skłodowska-
Curie Actions

Doctoral Networks

MSCA Doctoral Networks

- **Multi-beneficiary Action** to set up **doctoral programmes**, including
 - **Industrial Doctorates**: Training in academia and industry, Joint supervision
 - **Joint Doctorates**: Joint collaborations leading to a joint/multiple doctoral degree, Joint selection and supervision; pre-agreement for joint degrees required
- Respond to **well-identified needs** in various R&I areas (bottom-up), expose the researchers to the **academic and non-academic sectors**, and **offer training in research-related, as well as competences relevant for innovation and long-term employability**
- Focus on **research and transferable skills**, (inter-sectoral secondments), **career development plan, supervision, internationalisation/attractiveness**












Doctoral Networks: eligibility/researchers

- Supported researchers must be **doctoral candidates** (not already in possession of a doctoral degree at the date of recruitment)
- Researchers must be **enrolled in a doctoral programme**, in at least 1 EU Member State/Associated Country (at least 2 for Joint Doctorates)
- **Any nationality**
- **Mobility rule**: must not have resided or carried out main activity in the country of the recruiting beneficiary for more than 12 months immediately before their recruitment date

MSCA DN: eligibility/organisations

- **Who applies?**
 - **Consortia** of universities, research institutions and research infrastructures, businesses including SMEs, and other socio-economic actors
 - At least **three independent legal entities**, each established in a different MS or AC; minimum of 1 beneficiary from a MS (on top of this minimum, any entity from any third country can join; no minimum for associated partners)
- **All beneficiaries must recruit at least one doctoral candidate.** They are required to host at their premises and supervise recruited researchers, or use associated partners linked to them to do so.
- **Not more than 40.0% of the EU contribution may be allocated to beneficiaries in the same country** or to a single international organisation.

Beneficiaries/Associated Partners

	Beneficiaries	Associated Partners
Academic/Non-academic		
Signatories of the Grant Agreement		
Recruitment of researchers		
Training and/or hosting of seconded researchers		
Participation in Supervisory Board		
Directly claim costs		

MSCA DN

- **Size**
 - Up to **360 person-months** (standard) + **180 additional person-months for joint or industrial doctorates** (incentive)
- **Duration**
 - **Programme:** max. 48 months
 - **Fellowship:** between 3 and 36 months
 - **Secondments:** worldwide, up to 1/3 of the fellowship duration
 - **Industrial doctorates:** 50% in the non-academic sector; academic and non-academic organisations jointly supervising can be in the same country

 - **Resubmission restrictions** applying as of 2022 for applications receiving a score **below 80%**

Doctoral Networks: Unit contributions

Contributions for recruited researchers Per person-month					Institutional unit contributions Per person-month	
Living allowance	Mobility allowance	Family allowance (if applicable)	Long-term leave allowance (if applicable)	Special needs allowance (if applicable)	Research, training and networking contribution	Management and indirect contribution
EUR 3 400	EUR 600	EUR 660	EUR 4 000 x % covered by the beneficiary	Requested unit ¹ x (1/number of months)	EUR 1 600	EUR 1 200



MSCA-NET project

MSCA DOCTORAL NETWORKS HANDBOOK CALL 2023



Marie Skłodowska- Curie Actions

Staff Exchanges

The call is now open!

[HORIZON-MSCA-2023-SE-01-01](#)

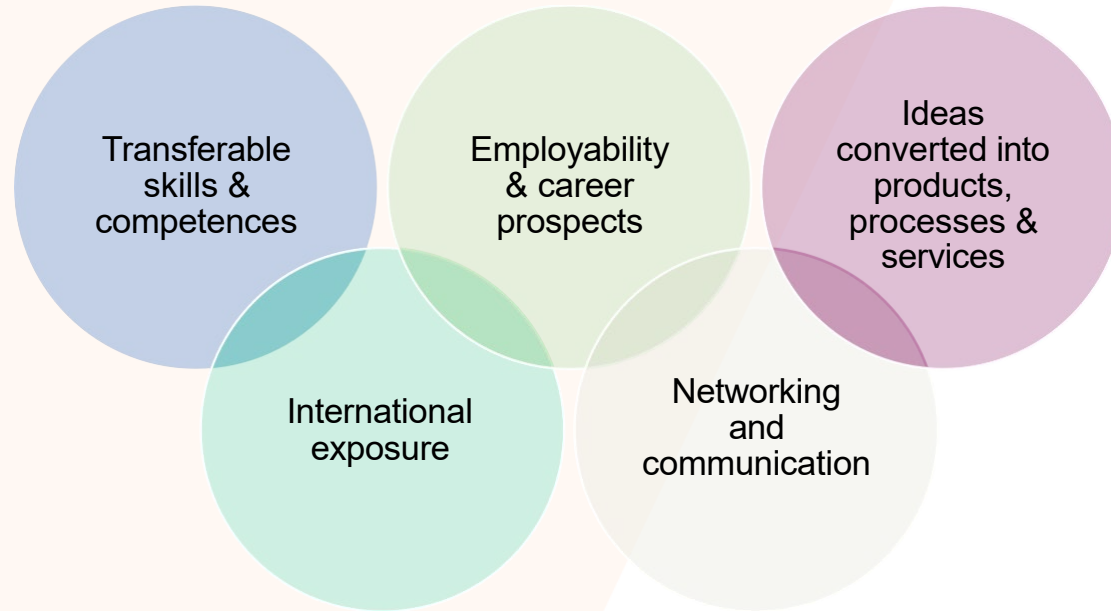
Deadline: 28 Feb 2024

MSCA Staff Exchanges

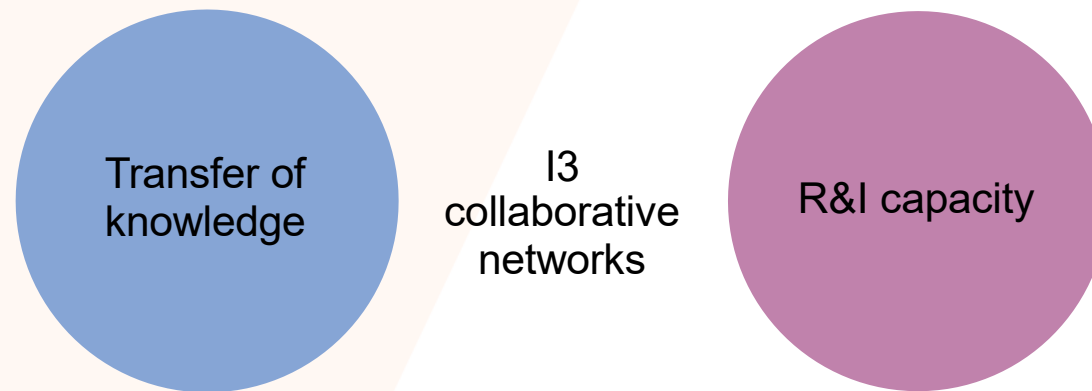
Main objectives

- International, inter-sectoral and interdisciplinary mobility of R&I staff (“secondments”)
- Knowledge transfer between participating organisations
- Collaboration between the academic and non-academic sectors (including SMEs)
- Cooperation across the globe

Outcome for staff members



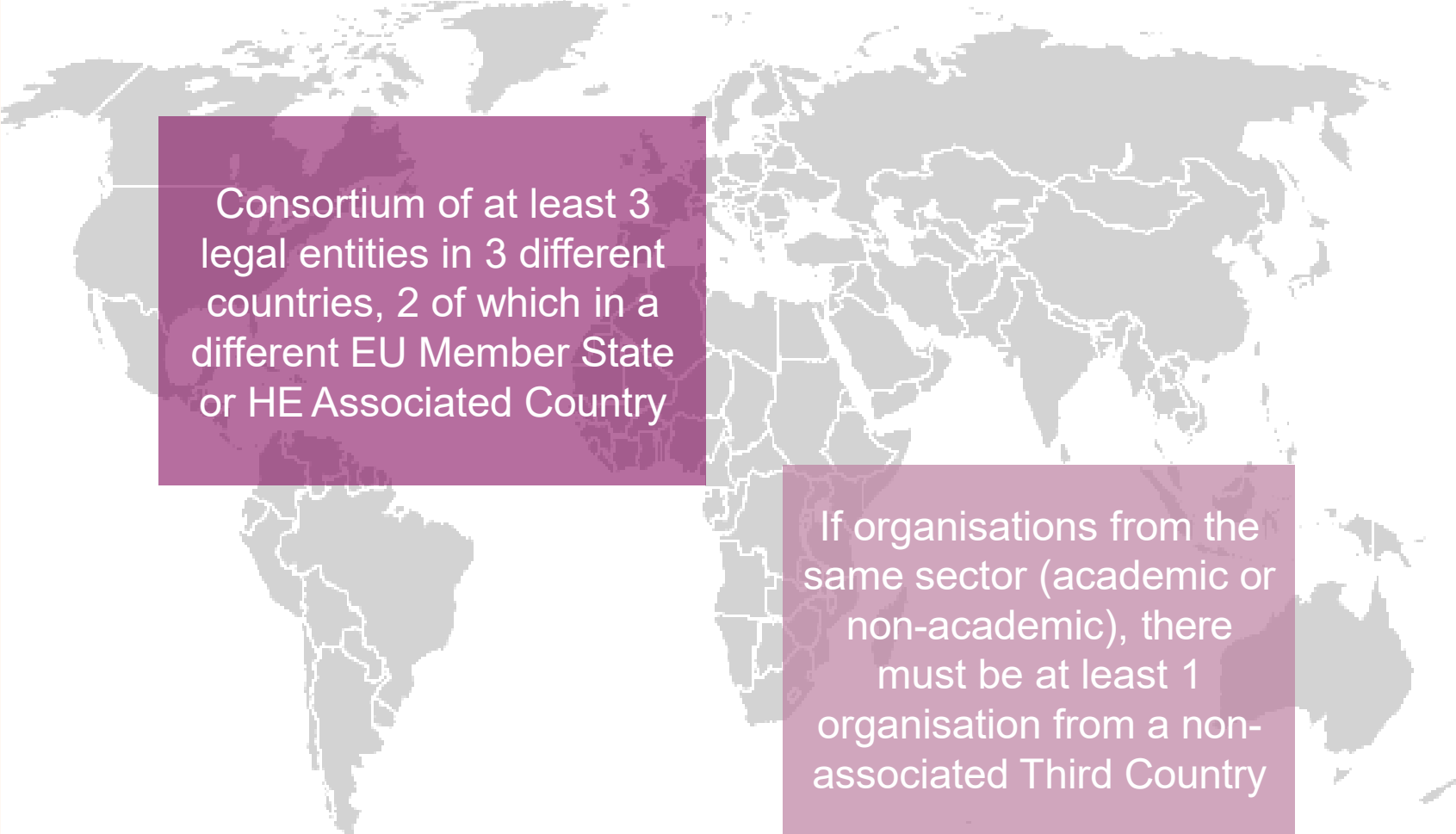
Outcome for organisations



Activities

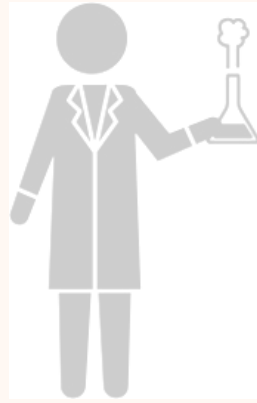
- Implementation of a joint R&I project by seconding and/or hosting eligible staff members
- Three dimensions of mobility: inter-sectoral, international and interdisciplinary
- Networking activities, organisation of workshops and conferences
- New skills acquisition and career development perspectives

Participating organisations

A light gray world map is centered in the background of the slide. Two dark purple rectangular boxes are overlaid on the map, containing white text. The first box is positioned over Europe and the second box is positioned over Asia and Australia.

Consortium of at least 3 legal entities in 3 different countries, 2 of which in a different EU Member State or HE Associated Country

If organisations from the same sector (academic or non-academic), there must be at least 1 organisation from a non-associated Third Country



Seconded staff members



Any type of staff contributing to R&I activities (researchers, administrative staff, managerial staff, technical staff)

Researchers at any career stage (from doctoral candidates to postdoctoral researchers)

Actively engaged in research and/or innovation activities for at least **1 month prior** at the sending institution

Each staff member is seconded for a period of 1 to 12 months (may be split into several stays)

Staff needs to be devoted full-time to the action during the secondment

After the secondment, staff should return to their sending institution

Duration

- 4 years for project implementation
- Maximum 360 person-months per project (novelty)
- Secondments: 1-12 months per staff
- Interdisciplinary secondments in the same sector possible within Europe (max 1/3 of project's person-months) (novelty)

MSCA SE UNIT COSTS

Contributions for seconded staff members Per person-month		Institutional unit contributions Per person-month	
Top-up allowance	Special needs allowance (if applicable)	Research, training and networking contribution	Management and indirect contribution
EUR 2 300	Requested unit ¹ x (1/number of months)	EUR 1 300	EUR 1 000

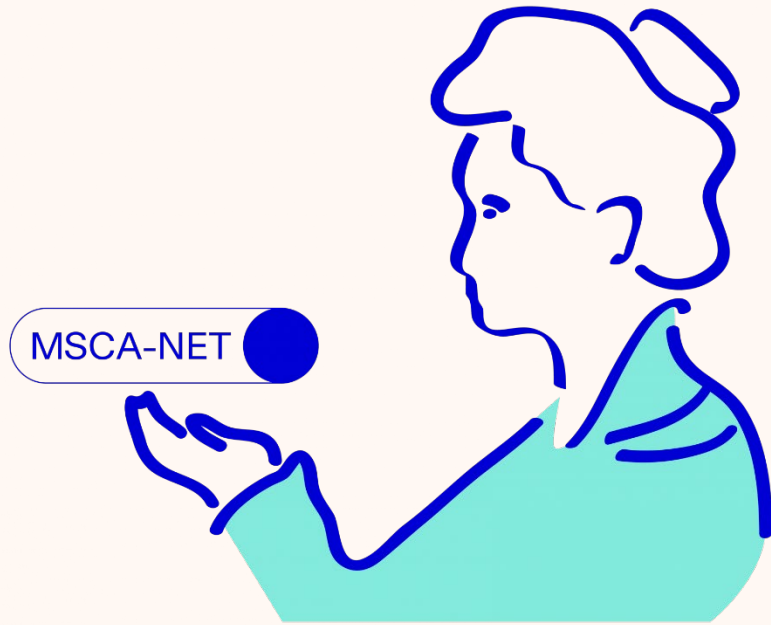
Top-up allowance: travel, accommodation and subsistence costs

Research, training and networking contribution: training, transfer of knowledge, networking activities and research expenses

Management and indirect contribution: beneficiary's additional costs



Participating organisations are expected to continue paying the salary of the staff during the secondment



MSCA-NET project

SE Handbook

This document provides you with up-to-date tips and tricks on how to ace your MSCA SE proposal.

SE 2022 Handbook



Marie Skłodowska- Curie Actions

COFUND

NOW OPEN!

[HORIZON-MSCA-2023-COFUND-01-01](#)

Deadline: 8 Feb 2024

MSCA COFUND

- ***Mono-beneficiary action*** to **co-fund** new or existing national, regional, institutional schemes for **doctoral** training and **postdoctoral** fellowships
- **Focus**
 - Spread **best practices** of the MSCA by promoting **high standards** in the recruitment process and **excellent working conditions**
 - Introduce **sustainable structuring effects**, by promoting excellent and sustainable research training, international, inter- sectoral and interdisciplinary cooperation and mobility
 - Encourage **synergies** with Cohesion policy funds as well as the Recovery and Resilience Facility. Programmes could focus on specific disciplines, notably when based on RIS³.

MSCA COFUND

- **Target groups**
 - **Doctoral candidates**, i.e. researchers without a doctoral degree at the deadline of the co-funded programme's call; mandatory enrolment in a doctoral programme
 - **Postdoctoral researchers**, i.e. researchers with a doctoral degree at the deadline of the co-funded programme's call
- **Who applies?**
 - **Single legal entity** established in an EU Member State or HE Associated country.
 - A **minimum of three researchers** must be recruited.
- **Career Development Plan**
 - To be jointly established by the supervisor and each recruited researcher upon recruitment. Revised (and updated where needed) within 18 months

MSCA COFUND

- **Co-funding**
 - Max **10 M€** per beneficiary per call (unchanged)
 - The EU contribution covers **minimum remuneration** (70% living + mobility allowance) and can be used more **flexibly**
- **Duration**
 - **Programme**: max. 60 months (unchanged)
 - **Fellowship**: min 3 months
 - **Secondments**: up to 1/3 of the fellowship duration
- Introduction of an MSCA Cofund **Seal of Excellence** for applications scoring $\geq 85\%$

MSCA COFUND unit contributions

Contributions for recruited researchers and institutional contributions			
Per person-month			
	COFUND allowance	Long-term leave allowance (if applicable)	Special needs allowance (if applicable)
Doctoral Programmes	EUR 2 800	EUR 2 800 x % covered by the beneficiary	Requested unit ¹ x (1/number of months)
Postdoctoral Programmes	EUR 3 980	EUR 3 980 x % covered by the beneficiary	Requested unit ¹ x (1/number of months)

Minimum remuneration applies:

EUR 2 800 for Doctoral researcher, EUR 3 980 for Postdoctoral researcher



MSCA-NET project

COFUND Handbook

This document provides you with up-to-date tips and tricks on how to ace your MSCA COFUND proposal.



Marie Skłodowska-
Curie Actions

Postdoctoral Fellowships

MSCA PF

- Main Objectives:
 - **Foster excellence** through implementation of research project
 - Enhance the **creative and innovative potential** of researchers holding a PhD (training on transferable skills & career development)
 - Focus on **i3** (international, inter-sectoral, interdisciplinary) mobility
 - Bridges and **exposure to the non-academic sector**
- Research areas:
 - **All scientific fields**
 - Including Euratom areas (indicative amount EUR 1 million annually) within existing scientific panels - **novelty**

Activities:

- **Mono-beneficiary action to support post-doctoral research and careers with:**
 - **European Postdoctoral Fellowships:** coming to Europe
 - from any country in the world or moving within Europe
 - No separate panels – mainstreamed incentives– **novelty**
 - **Global Postdoctoral Fellowships** outside EU Member States and Horizon Europe AC.

** Widening activities: “ERA Fellowships” will be aligned with the MSCA Postdoctoral Fellowships call*

You can also [check the list of hosting offers \(expressions of interest\) published on Euraxess](#)

MSCA PF

- **Who applies?**
 - Legal entity in an EU Member State or HE Associated country
- **Recruited Researchers:**
 - any nationality (Global Fellowships: nationals or long-term residents of MS or HE AC)
 - in possession of PhD at the call deadline – **novelty**
 - up to 8 years research experience after PhD (with exceptions= career breaks, work outside research, research outside Europe for reintegrating researchers) – **novelty**
 - **mobility rule:** not resided /main activity in the country of the beneficiary (or host organization for GF) more than 12 in the 36 months before call deadline

MSCA PF

- **Duration**
 - **European Fellowships:** 12-24 months
 - **Global Fellowships:** 24-36 months (12-24 outgoing phase & 12 months mandatory return phase in Europe)
- **Secondments worldwide (novelty!)** up to 1/3 of the fellowship duration – **Optional additional placement of up to 6 months in a non-academic European organization (novelty!)**
 - at the end of the fellowship applicable to both European and Global PF
 - Resubmission restrictions applying as of 2022 for **applications receiving a score below 70%**

MSCA PF unit contributions

Contributions for recruited researchers Per person-month					Institutional unit contributions Per person-month	
Living allowance	Mobility allowance	Family allowance (if applicable)	Long-term leave allowance (if applicable)	Special needs allowance (if applicable)	Research, training and networking contribution	Management and indirect contribution
EUR 5 080	EUR 600	EUR 660	EUR 5 680 x % covered by the beneficiary	Requested unit ¹ x (1/number of months)	EUR 1 000	EUR 650

* A country correction coefficient applies to the living allowance in order to ensure equal treatment and purchasing power parity for all researchers

RS: 57,7 %



MSCA-NET project

PF Handbook

This document provides you with up-to-date tips and tricks on how to ace your MSCA PF proposal.



Marie Skłodowska-
Curie Actions

MSCA and Citizens

MSCA and Citizens

- Coordination and Support Action to **bring research and researchers closer to the public at large**, through the organisation of the **European Researchers' Night**
- **Target group:** general public, pupils, families, students
- **Focus:**
 - Enhance **engagement with citizens** on R&I
 - Increase awareness among the general public of the **importance and benefits of R&I** and its concrete impact on citizens' daily life
 - Raise **young people's interest in research** and science
 - Improves **researchers' communication skills** and competences

The European Researchers' Night

- **Who applies?**
 - **One or more legal entities** established in an EU Member State or HE Associated country
- **EU contribution**
 - Lump-sum contributions
 - Contribution estimated **between 50-150k€ per annual edition** of the European Researchers' Night
- **Duration**
 - A call covers two successive editions Applicants encouraged to submit proposals covering two successive editions of the NIGHT

MSCA WP 2023-2024 calls & deadlines

Training and Mobility Actions	MSCA Doctoral Networks	MSCA Postdoctoral Fellowships	MSCA Staff Exchanges	MSCA COFUND	MSCA and Citizen
	<p>Call 2023</p> <p>Opening: 30 May 2023</p> <p>Deadline(s): 28 Nov 2023</p>	<p>Call 203</p> <p>Opening: 12 Apr 2023</p> <p>Deadline(s): 13 Sep 2023</p>	<p>Call 2023</p> <p>Opening: 05 Oct 2023</p> <p>Deadline(s): 28 Feb 2024</p>	<p>Call 2023</p> <p>Opening: 10 Oct 2023</p> <p>Deadline(s): 08 Feb 2024</p>	<p>Call 2023</p> <p>Opening: 20 June 2023</p> <p>Deadline(s): 25 Oct 2023</p>
	<p>Call 2024</p> <p>Opening: 29 May 2024</p> <p>Deadline(s): 27 Nov 2024</p>	<p>Call 2024</p> <p>Opening: 10 Apr 2024</p> <p>Deadline(s): 11 Sep 2024</p>	<p>Call 2024</p> <p>Opening: 10 Oct 2024</p> <p>Deadline(s): 05 Mar 2025</p>	<p>Call 2024</p> <p>Opening: 08 Oct 2024</p> <p>Deadline(s): 06 Feb 2025</p>	

Resources

All calls are published on the [Funding and Tender Opportunities Portal](#)

- [Marie Skłodowska-Curie Actions](#) official website
- [MSCA-NET project](#) → fantastic resources: handbooks, guidelines, FAQs, blog, etc.



Thank you!

Gordana Vlahovic
email: gordanav@uns.ac.rs

#MSCA #HorizonEU
@MSCActions

<https://ec.europa.eu/research/mariecurieactions/>



© European Union 2021

Unless otherwise noted the reuse of this presentation is authorised under the [CC BY 4.0](https://creativecommons.org/licenses/by/4.0/) license. For any use or reproduction of elements that are not owned by the EU, permission may need to be sought directly from the respective right holders. Image sources: iStockphoto.com/Unsplash